

A large blue graphic element that looks like a speech bubble or a banner. It contains the text 'Public Consultation' and 'Key Information'. The word 'Public' is enclosed in a dotted white box. The word 'Consultation' is in a larger font. Below it, 'Key Information' is written in white on a darker blue rectangular background. The graphic has a white dotted line trailing off to the right.

Public

Consultation

Key Information

**Relating to four of
Lincolnshire's NHS Services**

Orthopaedic surgery

Urgent and emergency care at Grantham and District Hospital

Acute medical beds at Grantham and District Hospital

Stroke services

This document is available in other languages and formats. To request alternative formats or if you require the services of an interpreter, please contact us on 01522 421860 Monday – Friday 9am – 5pm or email us at lccg.asr-enquiries@nhs.net

Bulgarian

По заявка този документ е наличен на други езици и в други формати. За да заявите друг формат или ако имате нужда от услугите на устен преводач, молим да се свържете с нас.

Czech

Pokud byste požadovali informace v jiném jazyce nebo formátu, kontaktujte nás.

Italian

Se desiderate ricevere informazioni in un'altra lingua o in un'altra lingua o in un altro formato, siete pregati di chiedere.

Latvian

Šis dokuments pēc pieprasījuma ir pieejams citās valodās un formātos. Lai pieprasītu to citā formātā vai ja jums ir nepieciešami tulka pakalpojumi, lūdzu, sazinieties ar mums.

Lithuanian

Jei norėtumėte gauti informaciją kita kalba ar formatu, kreipkitės į mus.

Polish

Jeżeli chcieliby Państwo uzyskać informacje w innym języku lub innym formacie, prosimy dać nam znać.

Portuguese

Se deseja obter informação noutra idioma ou formato, diga-nos.

Romanian

Acest document este disponibil la cerere și în alte limbi și formate. Pentru a cere alte formate, sau în cazul în care aveți nevoie de serviciile unui interpret, vă rugăm să luați legătura cu noi.

Russian

Этот документ доступен на других языках и в других форматах по запросу. Для того чтобы запросить альтернативные форматы, или если вам требуются услуги переводчика, свяжитесь с нами.

What is this public consultation about?

This public consultation is about potential changes to the future configuration of four NHS services in Lincolnshire.

The NHS in Lincolnshire has looked very carefully at these four services because we know that the current configuration of services is not fit for purpose. This means that care for patients is not as good as it could be. Through this consultation, we want to hear the public's views on our proposals for change. We will listen very carefully to what the public says, before making any final decisions.

What services are included in this consultation?

Four NHS services are included in this consultation:

- Orthopaedic surgery across Lincolnshire
- Urgent and emergency care at Grantham and District Hospital
- Acute medical beds at Grantham and District Hospital
- Stroke services across Lincolnshire

Whilst we are only consulting on the four NHS services, we continuously welcome feedback on all NHS services in the county. To give us your feedback on any other services, go to www.lincolnshire.nhs.uk

The consultation will run for 12 weeks, from 30 September until 23 December.

Why we need to change

Our vision is to deliver the very best in health and care for people across Lincolnshire, and we seek to continuously improve services wherever we can.

This consultation is focused on these four NHS services because we believe that significant and permanent improvement is required to them. Such change would ensure that the highest possible standards of patient care are provided in line with clinical evidence and best practice, giving the best possible outcomes for patients. We are consulting to understand the potential impact of these changes on you before we make a decision.

We believe that the benefits of changing will include:

- Improved quality of care
- Reduced waiting times
- Better outcomes for patients
- Increased availability of staff to care for patients
- Better use of NHS funds, reducing spend on temporary staff

If we improve these four NHS hospital services, we believe there will be:

1. Shorter waiting times for planned orthopaedic procedures in Lincolnshire
2. Fewer cancellations of planned orthopaedic procedures in Lincolnshire
3. Better urgent and emergency care for patients across Lincolnshire
4. Better outcomes for Lincolnshire stroke patients
5. More integrated community and hospital medical services
6. Quicker access to specialist staff across these four NHS services
7. Clinically optimum hospital stays for recovering stroke patients
8. Reduced risk that Lincolnshire would lose these services if they become unsustainable
9. Increased ability for the NHS in Lincolnshire to attract new staff to work in the county
10. Better retention of staff already in the county, as they would be working for more sustainable and progressive services
11. Reduced spend on temporary and locum staff to fill gaps in the rota, caused by too few permanent staff to fill them

Overview of our change proposals

A comprehensive explanation of how we came up with the proposals to change and the assessment criteria, as well as public engagement feedback to date is available on our website www.nhs.lincolnshire.co.uk

Orthopaedic surgery

Lincolnshire NHS's preference:

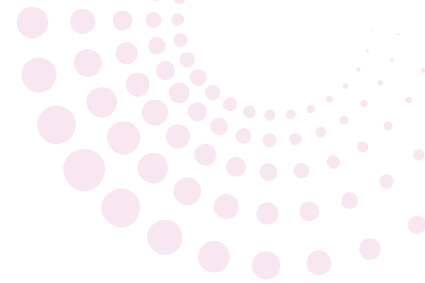
Consolidate planned orthopaedic surgery at Grantham and District Hospital

A dedicated day centre at County Hospital Louth

- All unplanned orthopaedic surgery delivered by dedicated, specialist staff at ULHT will take place at Lincoln County Hospital, and Pilgrim Hospital, Boston
- A 'centre of excellence' in Lincolnshire for planned orthopaedic surgery would be established at Grantham and District Hospital
- A dedicated day case centre at County Hospital Louth for planned orthopaedic surgery
- A pilot of these services has demonstrated:
 - Care provided in line with national best practice and care standards
 - A reduction in the amount of time patients wait for their planned orthopaedic surgery
 - Reductions in the number of patients who have their planned orthopaedic surgery cancelled due to a lack of beds
 - A reduction in the amount of time patients spend in hospital after their planned surgery
 - An improvement in patient satisfaction and experience
 - A reduction in the number of patients receiving their care in the private sector, funded by the NHS

By making changes, we can look to ensure:

- Improvements in the quality of patient care and outcomes evident during the pilot become permanent
- Reductions in the number of patients who have their planned orthopaedic surgery cancelled on the day
- Reductions in the amount of time patients wait for their planned orthopaedic surgery is reduced, so they are treated quicker
- Overall patient experience and satisfaction is improved, including reducing the amount of time spent in hospital after surgery
- More Lincolnshire patients choose to have their orthopaedic surgery in Lincolnshire
- The number of patients going to the private sector for planned orthopaedic surgery, paid for by the local NHS, is reduced
- The need for temporary staff to cover vacancies is reduced
- The orthopaedic service is able to attract and retain talented and substantive staff to build an effective, high quality, successful team
- Orthopaedic services are provided to Lincolnshire's patients in line with national best practice and care standards



Urgent and emergency care at Grantham and District Hospital

Lincolnshire NHS's preference:

Grantham and District Hospital A&E department to become a 24/7 Urgent Treatment Centre (UTC)

- 24/7 walk-in urgent care services at Grantham and District Hospital would be provided by a sustainable and permanent UTC
- The vast majority (estimated to be around 97%) of patients currently seen by the A&E department at Grantham and District Hospital would continue to be treated by the proposed Urgent Treatment Centre (UTC)
- Compared to the current Grantham and District Hospital A&E Department, access overall would increase as the UTC would be open 24/7. Greater access would also be provided for children
- The UTC would be provided by a community health service provider, which will support better integration with primary care and community services and the provision of care closer to home
- For the small number of patients who wouldn't be able to have their care needs met by the UTC in Grantham, care would be received at an alternative site with the right facilities and expertise to ensure the best patient outcomes

By making changes, we can look to ensure:

- High quality urgent care services are delivered at Grantham and District Hospital on a 24/7 basis in a sustainable way for the long term
- Making relatively small changes in the scope of safe and high-quality services, ensuring Grantham and District Hospital receives patients in line with its medical capabilities
- Those few patients with the highest levels of need that cannot be met at Grantham and District Hospital receive care in the most appropriate and safest place for them
- Improve our ability to attract and retain talented and substantive staff to an effective, high quality, successful and sustainable service
- All patients see the right clinician for their needs, first time, 24/7, and therefore receive the best possible care, including not having to wait unnecessarily
- Patient health and the overall patient experience are improved

Acute medical beds at Grantham and District Hospital

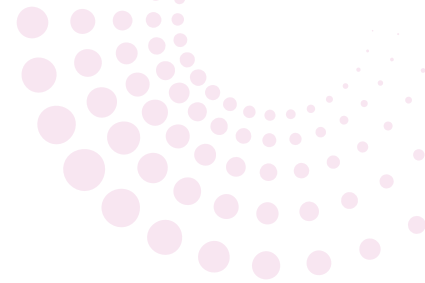
Lincolnshire NHS's preference:

Integrated community/acute medical beds at Grantham and District Hospital

- Acute medical beds would be retained locally at Grantham and District Hospital in a sustainable way
- The vast majority of patients currently receiving care in the acute medical beds at Grantham and District Hospital would continue to be treated in the integrated community/acute medical beds
- Compared to the current Grantham and District Hospital acute medical beds, a more comprehensive service would be delivered, particularly for frail people, and enable greater integration with community health and care services
- Maintaining a local service at Grantham and District Hospital would reduce pressure on Lincoln County Hospital and Pilgrim Hospital, Boston, and enable greater integration with community health and care services
- For the small number of patients who wouldn't be able to have their care needs met by the integrated community/acute medical beds in Grantham, care would be received at an alternative site with the right facilities and expertise to ensure the best care for them

By making changes, we can look to ensure:

- High quality acute medical services are delivered locally in a sustainable way for the long term
- The volume and complexity of presenting emergency conditions at hospitals in Lincolnshire is matched to the level of acute medical beds service provided at each site
- Improve ability of services to attract and retain talented and substantive staff to a high quality and successful service
- Improved integration with community health and care services
- Patients who require specialist care are identified early and attend the right service, first time and receive the best possible care
- Patient health and the overall patient experience are improved
- Better integration and collaboration with patients' GP surgeries and community teams



Stroke services

Lincolnshire NHS's preference:

Consolidate hyper-acute and acute stroke services on the Lincoln County Hospital site, supported by an enhanced community stroke rehabilitation service

- A 'centre of excellence' in Lincolnshire for hyper-acute and acute stroke services would be established at Lincoln County Hospital. Pilgrim Hospital, Boston would no longer provide hyper-acute or acute stroke services
- Hospital stroke service provision would be based on national clinical evidence, which has demonstrated stroke patients are more likely to survive, recover more quickly and spend less time in hospital
- Hospital stroke services in Lincolnshire would be in a stronger position to attract and retain talented staff by building a strong, high quality and successful service, making it sustainable for the long term
- More patients would benefit from hospital stroke services being located on the same hospital site as the highly successful Lincolnshire Heart Centre. These benefits include increased access to important time critical interventions and acute imaging services, further reducing time to treatment
- Stroke patients would spend the minimum time necessary in a hospital bed, by ensuring community services have the right skills and capacity to provide high quality rehabilitation to stroke patients as they return home, or as close to home as possible

By making changes, we can look to ensure:

- High quality hyper-acute and acute stroke services are delivered in Lincolnshire in a sustainable way for the long term
- Hospital stroke services are based on national clinical evidence
- We achieve a balance between access and ensuring the long term sustainability of services
- Our hospital stroke services receive over 600 stroke patients a year so that our doctors and nurses here in Lincolnshire maintain and develop their specialist skills and expertise
- Improved ability of hospital stroke services to attract and retain talented and substantive staff by building a strong, high quality and successful service

- Stroke patients spend the minimum time necessary in a hospital bed, by ensuring community services have the right skills and capacity to support stroke patients at home, or as close to home as possible
- Patients are more likely to receive timely assessment, treatment and diagnosis when they arrive at hospital
- Patients are more likely to see the right specialist, first time, 24/7 and receive the best possible care
- Health outcomes and the overall patient experience are improved

We know that this approach already works well in other services in the county. Through the establishment of the Lincolnshire Heart Centre at Lincoln County Hospital, Lincolnshire residents already have first-hand experience of the benefits to patient care that can be achieved by bringing together and consolidating highly specialist clinical expertise into a centre of excellence.

Have your say

If you live in or use these services in Lincolnshire it is important that you share your views on their future because the proposed options for change outlined in this document may affect you.

The consultation will run for 12 weeks, from 30 September until 23 December. There are lots of ways you can find out more about it, or get involved in our virtual and face-to-face events. Full details can be found on our website www.lincolnshire.nhs.uk

You can respond to the consultation by:

- Completing the questionnaire and sending it back to us at Opinion Research Services, FREEPOST SS1018, PO Box 530, Swansea, SA1 1ZL (no stamp required)

OR

- Completing the same questionnaire online on our website www.lincolnshire.nhs.uk

For more information about this, and the consultation, please visit www.lincolnshire.nhs.uk

The CCG has appointed ORS, an independent social research company, to manage the consultation questionnaire and responses and will faithfully report the outcomes. All information you provide will be processed by ORS in accordance with the latest Data Protection regulations. Information will only be used to inform this consultation and any personal information that could identify you will be kept for no more than one year after any decisions have been finalised.

The views of individual members of the public in a personal capacity will be anonymous. However, where feedback is from representatives of organisations or someone acting in an official capacity, it may be attributed to them.

All the questions are optional, and all information you provide will be processed by ORS in accordance with the Data Protection Act and GDPR. Please visit www.ors.org.uk/privacy and/or our CCG website www.lincolnshireccg.nhs.uk/contact/freedom-of-information/privacy-notice-your-information-and-how-we-use-it/ for more information.

